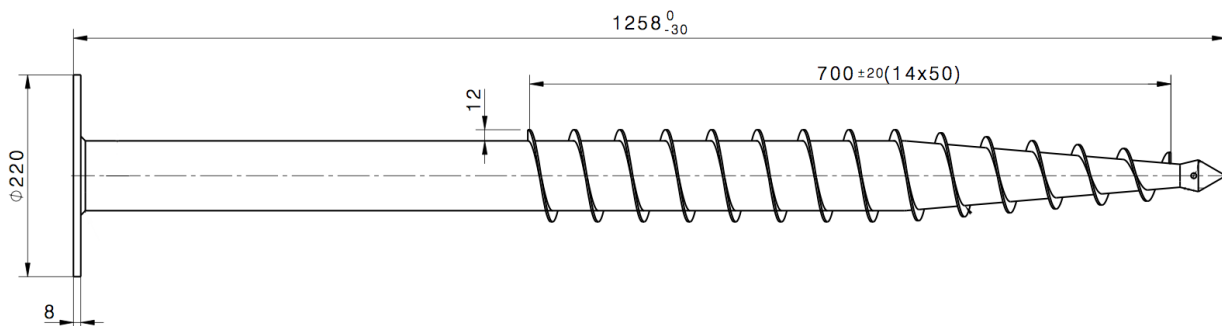
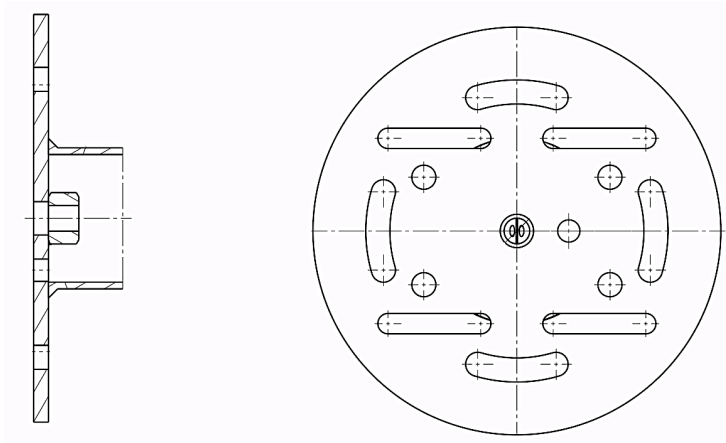
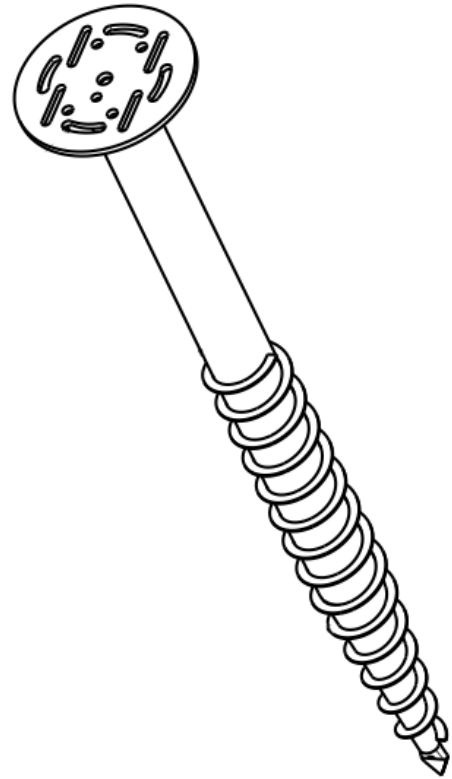


**F**

# SCREW ROUND M16 76x1250

## BASIC INFO

Article No.	56313
Weight	10,2 kg <sup>+3%</sup> -8% tolerance
Materials	Tube 76 x 3,6 x 1200 mm Flange 8 x 120 x 136,7 Steel S235
Surface	Hot-dip galvanized Steel, according to DIN EN ISO 1461
Installation	GEARBOX SET 1:150 + drilling head HEX MULTI  INSTALLATION MAST – HULK + drilling head PLATE MULTI  PILE DRIVER MACHINE – DINO + drilling head PLATE MULTI
Intended Use	Lumber, board, batten fixing
Anchoring	1 x screw M16

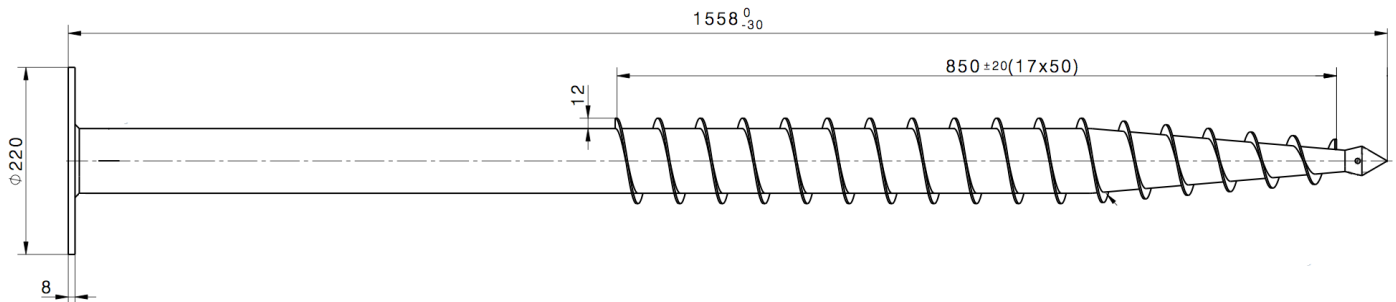
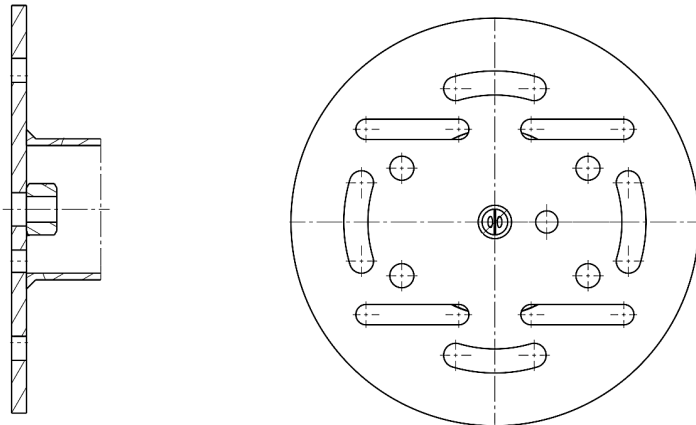
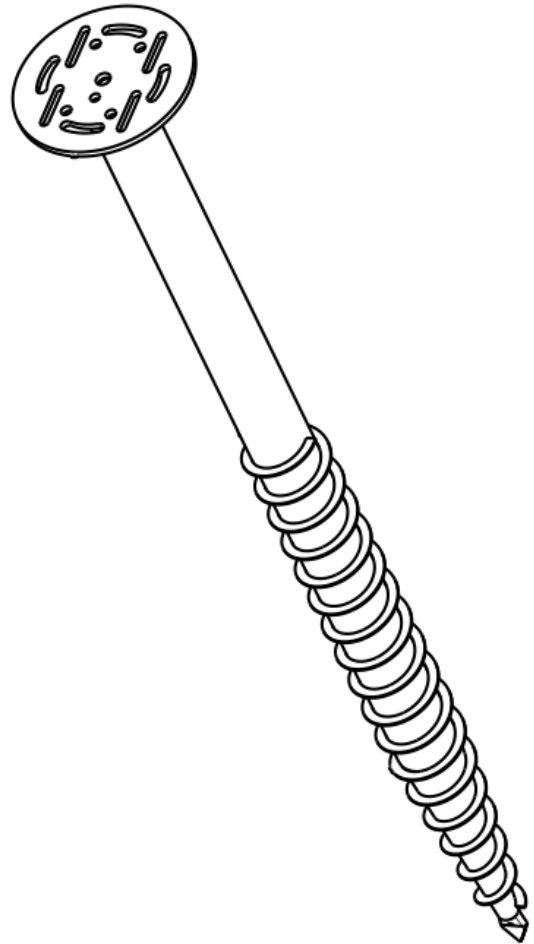


**F**

# SCREW ROUND M16 76x1550

## BASIC INFO

Article No.	56314
Weight	12,3 kg <sup>+3%</sup> <sub>-8%</sub> tolerance
Materials	Tube 76 x 3,6 x 1200 mm Flange 8 x 120 x 136,7 Steel S235
Surface	Hot-dip galvanized Steel, according to DIN EN ISO 1461
Installation	GEARBOX SET 1:150 + drilling head HEX MULTI
	INSTALLATION MAST – HULK + drilling head PLATE MULTI
Intended Use	PILE DRIVER MACHINE – DINO + drilling head PLATE MULTI
	Lumber, board, batten fixing
Anchoring	1 x screw M16



**F**

# SCREW ROUND M16 76x2050

## BASIC INFO

Article No.	56315
Weight	15,9 kg <sup>+3%</sup> <sub>-8%</sub> tolerance
Materials	Tube 76 x 3,6 x 2000 mm Flange 8 x 160 x 184,7 Steel S235
Surface	Hot-dip galvanized Steel, according to DIN EN ISO 1461
Installation	INSTALLATION MAST – HULK + drilling head PLATE MULTI  PILE DRIVER MACHINE – DINO + drilling head PLATE MULTI
Intended Use	Lumber, board, batten fixing
Anchoring	1 x screw M16

